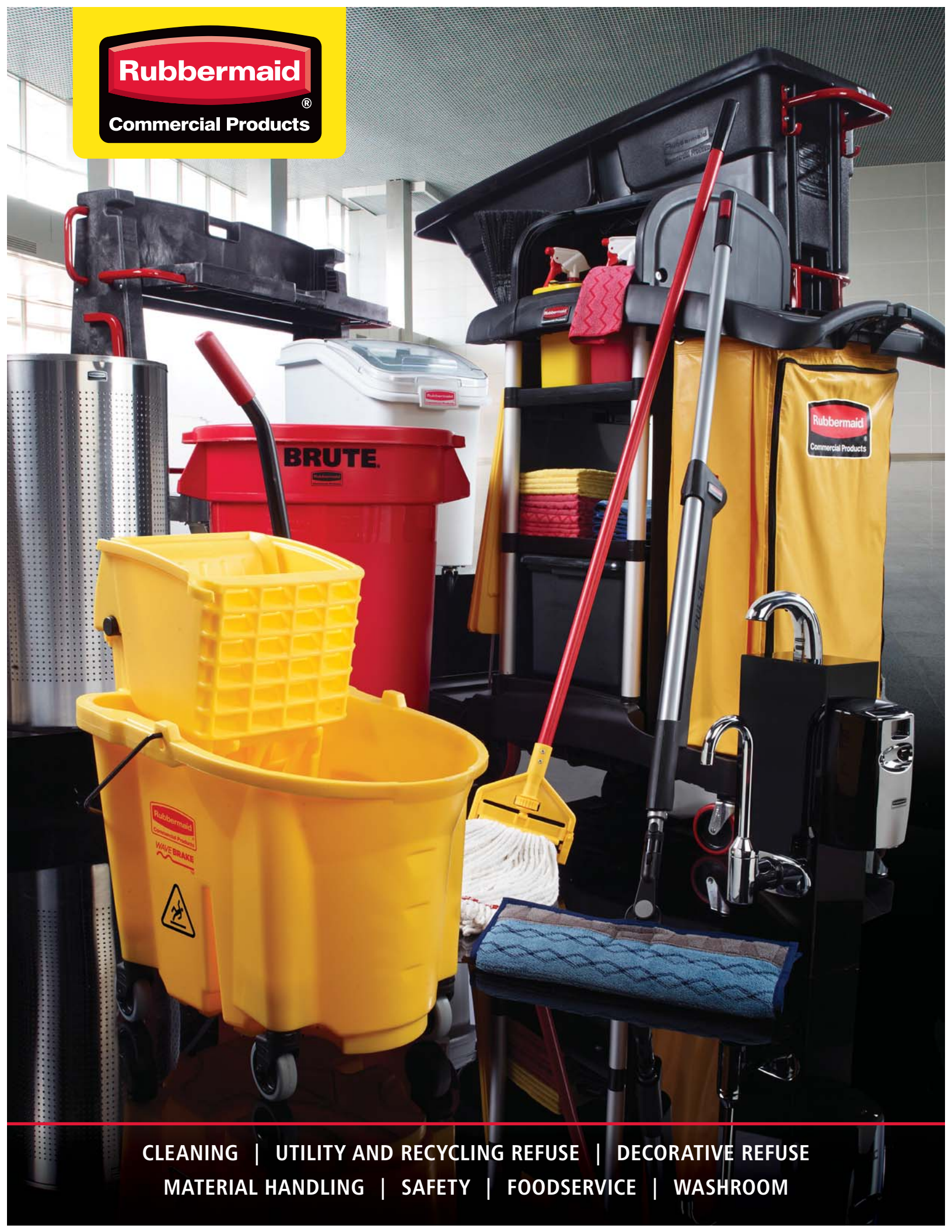


**Rubbermaid**

**Commercial Products**

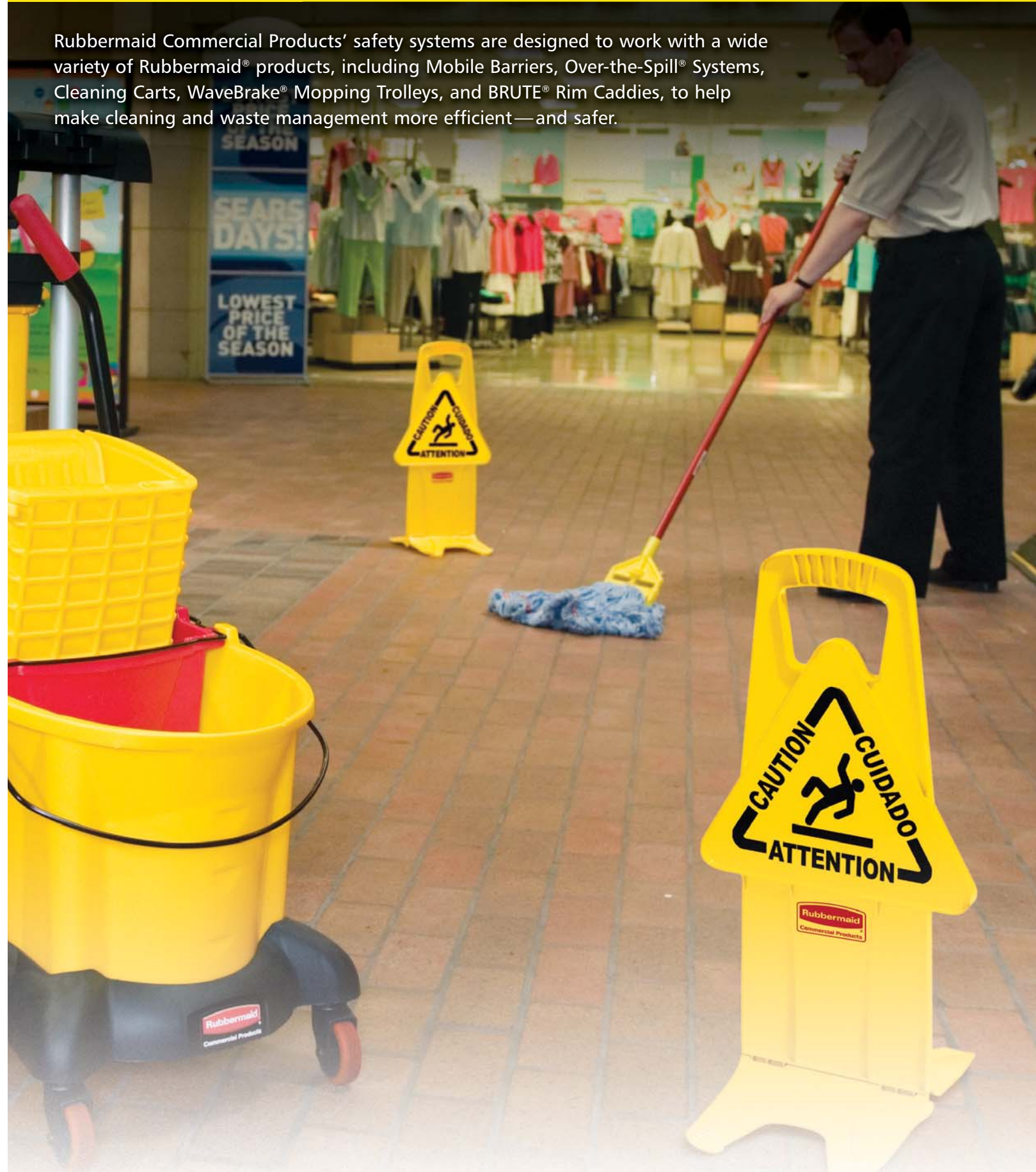


**CLEANING | UTILITY AND RECYCLING REFUSE | DECORATIVE REFUSE  
MATERIAL HANDLING | SAFETY | FOODSERVICE | WASHROOM**



# Work Safer, Work Smarter

Rubbermaid Commercial Products' safety systems are designed to work with a wide variety of Rubbermaid® products, including Mobile Barriers, Over-the-Spill® Systems, Cleaning Carts, WaveBrake® Mopping Trolleys, and BRUTE® Rim Caddies, to help make cleaning and waste management more efficient—and safer.





**BARRIERS AND SAFETY SIGNS**

Stable Safety Signs ..... 242  
 Floor Safety Signs ..... 242  
 Wooden Safety Signs ..... 243  
 Mobile Barrier ..... 243

**SAFETY CONES**

Cone Barrier System ..... 244  
 Pop-Up Safety Cones ..... 244  
 Folding Safety Cones ..... 244  
 Safety Cones and Accessories ..... 245  
 Site Safety Hanging Signs ..... 245

**SAFETY SIGNS AND OVER-THE-SPILL® SYSTEM**

Hanging Safety Sign ..... 246  
 Over-the-Spill® System ..... 247

### Stable Safety Signs

Unique “no tip” design and bold graphics quickly capture pedestrian attention.

- Folds for convenient storage and transport on Janitor Cart (FG617388) or Rim Caddy (FG9W8700)
- Large, 13" warning triangle with bold graphics
- Only 1½" thick when closed
- Self-opening feet provide a wide, stable base
- Low center of gravity helps prevent tipping when bumped, kicked, or windblown
- ANSI and OSHA compliant color and graphics\*\*



FG9S0925



| No.      | Color | Description   | U.S. Dimensions  | U.S. Ship Wt/Ctn | Metric Dimensions   | Metric Ship Wt/Ctn | Pack |
|----------|-------|---|--|------------------|---|--------------------|------|
| FG950900 | YEL   | Stable Safety Sign with “Caution” Imprint, English, Spanish, French | Open: 26" l x 13" w x 13¼" d<br>Closed: 32¼" l x 13" w x 1½" d | 9.5 lb           | Open: 66 cm x 33 cm x 33.6 cm<br>Closed: 81.9 cm x 33 cm x 3.8 cm | 4.3 kg             | 6    |
| FG9S0925 | YEL   | Stable Safety Sign with International Wet Floor Symbol              | Open: 26" l x 13" w x 13¼" d<br>Closed: 32¼" l x 13" w x 1½" d | 9.5 lb           | Open: 66 cm x 33 cm x 33.6 cm<br>Closed: 81.9 cm x 33 cm x 3.8 cm | 4.3 kg             | 6    |

### Floor Safety Signs

Lightweight, versatile signs for effective safety communication.

- “Closed” and “Caution” warning messages imprinted in English, French, and Spanish
- Folds for convenient storage and transport on Janitorial Carts or Rim Caddy (FG9W8700)
- Two- and four-sided models available
- ANSI- and OSHA-compliant color\* and graphics\*\*



| No.                    | Color | Description   | U.S. Dimensions                                      | U.S. Ship Wt/Ctn | Metric Dimensions  | Metric Ship Wt/Ctn | Pack |
|------------------------|-------|---|--|------------------|--|--------------------|------|
| FG611200*              | YEL   | Floor Sign with Multilingual “Caution” Imprint, 2-Sided                   | Open: 26" l x 11" w x 25" h<br>Closed: 26" l x 11" w | 15.0 lb          | Open: 66 cm x 27.9 cm x 63.5 cm<br>Closed: 66 cm x 27.9 cm   | 6.8 kg             | 6    |
| <b>New!</b> ES 1867505 | BLACK | Executive Series™ Floor Sign with Multilingual “Caution” Imprint, 2-Sided | Open: 26" l x 11" w x 25" h<br>Closed: 26" l x 11" w | 15.0 lb          | Open: 66 cm x 27.9 cm x 63.5 cm<br>Closed: 66 cm x 27.9 cm   | 6.8 kg             | 6    |
| <b>New!</b> ES 1867506 | GRAY  | Executive Series™ Floor Sign with Multilingual “Caution” Imprint, 2-Sided | Open: 26" l x 11" w x 25" h<br>Closed: 26" l x 11" w | 15.0 lb          | Open: 66 cm x 27.9 cm x 63.5 cm<br>Closed: 66 cm x 27.9 cm   | 6.8 kg             | 6    |
| FG611277               | YEL   | Floor Sign with “Caution Wet Floor” Imprint, 2-Sided                      | Open: 26" l x 11" w x 25" h<br>Closed: 26" l x 11" w | 15.0 lb          | Open: 66 cm x 27.9 cm x 63.5 cm<br>Closed: 66 cm x 27.9 cm   | 6.8 kg             | 6    |
| FG611278               | YEL   | Floor Sign with Multilingual “Closed” Imprint, 2-sided                    | Open: 26" l x 11" w x 25" h<br>Closed: 26" l x 11" w | 15.0 lb          | Open: 66 cm x 27.9 cm x 63.5 cm<br>Closed: 66 cm x 27.9 cm   | 6.8 kg             | 6    |
| FG611400               | YEL   | Floor Sign with Multilingual “Caution” Imprint, 4-Sided                   | Open: 38" l x 12" w x 37" h<br>Closed: 38" l x 12" w | 26.9 lb          | Open: 96.5 cm x 30.5 cm x 94 cm<br>Closed: 96.5 cm x 30.5 cm | 12.2 kg            | 6    |
| <b>New!</b> ES 1867509 | BLACK | Executive Series™ Floor Sign with Multilingual “Caution” Imprint, 4-Sided | Open: 38" l x 12" w x 37" h<br>Closed: 38" l x 12" w | 26.9 lb          | Open: 96.5 cm x 30.5 cm x 94 cm<br>Closed: 96.5 cm x 30.5 cm | 12.2 kg            | 6    |
| <b>New!</b> ES 1867510 | GRAY  | Executive Series™ Floor Sign with Multilingual “Caution” Imprint, 4-Sided | Open: 38" l x 12" w x 37" h<br>Closed: 38" l x 12" w | 26.9 lb          | Open: 96.5 cm x 30.5 cm x 94 cm<br>Closed: 96.5 cm x 30.5 cm | 12.2 kg            | 6    |
| FG611477               | YEL   | Floor Sign with “Caution Wet Floor” Imprint, 4-Sided                      | Open: 38" l x 12" w x 37" h<br>Closed: 38" l x 12" w | 26.9 lb          | Open: 96.5 cm x 30.5 cm x 94 cm<br>Closed: 96.5 cm x 30.5 cm | 12.2 kg            | 6    |
| FG611478               | YEL   | Floor Sign with Multilingual “Closed” Imprint, 4-Sided                    | Open: 38" l x 12" w x 37" h<br>Closed: 38" l x 12" w | 26.9 lb          | Open: 96.5 cm x 30.5 cm x 94 cm<br>Closed: 96.5 cm x 30.5 cm | 12.2 kg            | 6    |
| FG618400               | YEL   | 20' (6.1 m) Barrier Chain for FG611400 and Safety Cones                   | 0.25" dia x 20" l x 0.88" w                          | 5.2 lb           | 0.6 cm dia x 50.8 cm x 2.2 cm                                | 2.4 kg             | 4    |

\*Applies to yellow signs only. Executive Series™ gray and black Caution Signs are NOT compliant with OSHA nor ANSI colors or graphics.

\*Custom imprinting available; contact Rubbermaid Customer Service for details.

\*\*ANSI Z535.3–2002 Criteria for Safety Symbols; ANSI Z535–Safety Color; OSHA 1910.144–Safety Color; OSHA 1910.145–Specification for Accident Prevention Signage

WHEN ORDERING PRODUCTS WITH BOLD COLOR CODES, PLEASE SPECIFY COLOR CODE AFTER THE PRODUCT NUMBER. REFER TO THE PRODUCT COLOR GUIDE AT THE BACK OF THE CATALOG.



Check out the items marked with this symbol for our new line of Executive Series™ products.

**Wooden Safety Signs**

**2-sided hinged Caution signs.**

- Dark hardwood frame for added elegance
- Durable plastic feet help protect wood finish from spills
- Hinged top with integrated carry handle for easy transport and storage
- Available with gold or silver triligual Caution plate



ES 1867507



ES 1867508

| No.                    | Color  | Description   | U.S. Dimensions   | U.S. Ship Wt/Ctn | Metric Dimensions   | Metric Ship Wt/Ctn | Pack |
|------------------------|--------|---|---|------------------|---|--------------------|------|
| <b>New!</b> ES 1867507 | GOLD   | Executive Series™ Series™ Floor Sign with Multilingual "Caution" Imprint, 2-Sided | Open: 22" l x 15 1/2" w x 20" d<br>Closed: 23 3/4" l x 15 1/2" w x 2 1/4" d | 13.5 lb          | Open: 55.9 cm x 38.4 cm x 50.8 cm<br>Closed: 60.3 cm x 38.4 cm x 5.7 cm | 6.2 kg             | 1    |
| <b>New!</b> ES 1867508 | SILVER | Executive Series™ Series™ Floor Sign with Multilingual "Caution" Imprint, 2-Sided | Open: 22" l x 15 1/2" w x 20" d<br>Closed: 23 3/4" l x 15 1/2" w x 2 1/4" d | TBA              | Open: 55.9 cm x 38.4 cm x 50.8 cm<br>Closed: 60.3 cm x 38.4 cm x 5.7 cm | 6.2 kg             | 1    |

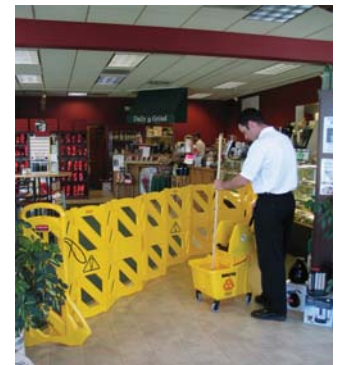
**Mobile Barrier**

Easy to use, highly visible mobile barrier for use in many situations.

- Flexible panels allow straight, curved, and circular configurations
- Extends to 13' when fully opened; locking straps keep barrier closed when not in use
- Lightweight and compact (2' x 13" footprint when closed)
- ANSI- and OSHA-compliant color and graphics\*\*
- For indoor use; shipped assembled



FG9S1100



**WORK AROUND ELECTRICAL EQUIPMENT?**

Excerpt from OSHA reg. 29 CFR 1910.335 (b)(2): "Barricades shall be used...to prevent or limit employee access to work areas...Conductive [metal] barricades may not be used where they might cause an electrical contact hazard."

| No.      | Color      | Description    | U.S. Dimensions  | U.S. Ship Wt/Ctn | Metric Dimensions   | Metric Ship Wt/Ctn | Pack |
|----------|------------|----------------|--|------------------|---|--------------------|------|
| FG9S1100 | <b>YEL</b> | Mobile Barrier | Open: 40" h x 13' l x 1" w<br>Closed: 40" h x 2' l x 13" w | 37.0 lb          | Open: 101.6 cm x 396 cm x 2.54 cm<br>Closed: 101.6 cm x 61.0 cm x 33.0 cm | 16.8 kg            | 1    |

\*\*ANSI Z535.3—2002 Criteria for Safety Symbols; ANSI Z535—Safety Color; OSHA 1910.144—Safety Color; OSHA 1910.145—Specification for Accident Prevention Signage

### Cone Barrier System

Complete, expandable system for quick deployment.

- FG628700 includes:
  - One 36" four-sided FG627600 Safety Cone
  - One steel double weight ring (27.2 lbs)
  - One belt cassette (7 ft x 3 in)
  - ANSI- and OSHA-compliant color and graphics\*\*
  - Expand the system with additional FG628700 units
  - Stackable and can be used with Square BRUTE® Dolly (FG353000) for easy transport



FG628700 (2 qty.)



| No.      | Color      | Description   | U.S. Dimensions                | U.S. Ship Wt/Ctn | Metric Dimensions          | Metric Ship Wt/Ctn | Pack |
|----------|------------|---|--------------------------------|------------------|----------------------------|--------------------|------|
| FG353000 | <b>BLA</b> | BRUTE® Square Dolly for FG352600, FG353600 Containers                                     | 17.25" sq x 6.25" h            | 18.5 lb          | 43.8 cm sq x 15.9 cm       | 8.4 kg             | 2    |
| FG628700 | <b>YEL</b> | Cone Barricade System Consists of FG627600, (1) Belt Cassette, and (1) Double Weight Ring | 12.25" l x 12.25" w x 39.75" h | 27.2 lb          | 31.1 cm x 31.1 cm x 101 cm | 12.3 kg            | 1    |

### Pop-Up Safety Cones

Collapsible, automatically deployable cone.

- Durable cone material withstands rough handling
- Wall-mounted, shatterproof storage tube provides easy and compact storage
- Storage tube mounting hardware includes tape and screws
- ANSI- and OSHA-compliant color and graphics\*\*



FG9S0000

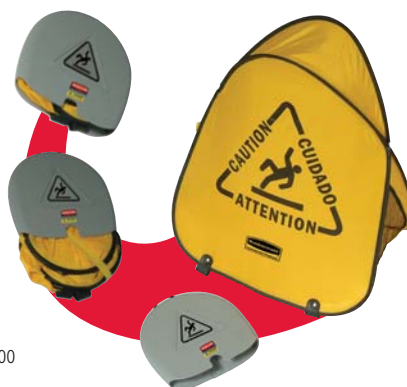


| No.      | Color      | Description  | U.S. Dimensions         | U.S. Ship Wt/Ctn | Metric Dimensions               | Metric Ship Wt/Ctn | Pack |
|----------|------------|--|-------------------------|------------------|---------------------------------|--------------------|------|
| FG9S0000 | <b>YEL</b> | Pop-Up Safety Cone, 20" (50.8 cm) with Multilingual "Caution" Imprint and Wet Floor Symbol | 21" dia x 21" w x 20" h | 12.7 lb          | 53.3 cm dia x 53.3 cm x 50.8 cm | 5.8 kg             | 12   |
| FG9S0100 | <b>YEL</b> | Pop-Up Safety Cone, 30" (76.2 cm) with Multilingual "Caution" Imprint and Wet Floor Symbol | 21" dia x 21" w x 30" h | 23.5 lb          | 53.3 cm dia x 53.3 cm x 76.2 cm | 10.7 kg            | 12   |

### Folding Safety Cones

Large cone folds with a simple twist and slides into compact shell for handy storage.

- Made of spring steel and durable, easy-clean fabric
- Highly visible—30% more surface area than competitive fabric safety cones
- Large when deployed; compact when folded and stored in shell
- Storage shell mounting hardware includes tape, strap, and screws
- ANSI- and OSHA-compliant color and graphics\*\*



FG9S0700



| No.      | Color      | Description  | U.S. Dimensions  | U.S. Ship Wt/Ctn | Metric Dimensions  | Metric Ship Wt/Ctn | Pack |
|----------|------------|--|--|------------------|--|--------------------|------|
| FG9S0700 | <b>YEL</b> | Folding Safety Cone with "Caution" Imprint, English, Spanish, French | Opened: 20" h x 18 3/4" w x 13" d<br>Closed: 8" h x 8" w x 1 1/2" d<br>Shell: 9" h x 8 3/4" w x 1 1/4" d | 16.5 lb          | Opened: 50.8 cm x 46.6 cm x 33.0 cm<br>Closed: 20.3 cm x 20.3 cm x 3.81 cm<br>Shell: 20.3 cm x 22.2 cm x 4.44 cm | 7.5 kg             | 12   |
| FG9S0725 | <b>YEL</b> | Folding Safety Cone with International Wet Floor Symbol              | Opened: 20" h x 18 3/4" w x 13" d<br>Closed: 8" h x 8" w x 1 1/2" d<br>Shell: 9" h x 8 3/4" w x 1 1/4" d | 16.5 lb          | Opened: 50.8 cm x 46.6 cm x 33.0 cm<br>Closed: 20.3 cm x 20.3 cm x 3.81 cm<br>Shell: 20.3 cm x 22.2 cm x 4.44 cm | 7.5 kg             | 12   |

\*\*ANSI Z535.3–2002 Criteria for Safety Symbols; ANSI Z535–Safety Color; OSHA 1910.144–Safety Color; OSHA 1910.145–Specification for Accident Prevention Signage

**WHEN ORDERING PRODUCTS WITH BOLD COLOR CODES, PLEASE SPECIFY COLOR CODE AFTER THE PRODUCT NUMBER. REFER TO THE PRODUCT COLOR GUIDE AT THE BACK OF THE CATALOG.**



Check out the items marked with this symbol for our new line of Executive Series™ products.